

CytoCell



A Sysmex Group Company

IGH *Plus* Range

Features

- Improve confidence in result interpretation with high intensity signals and minimal background
- Enhance detection and scoring accuracy with robust, easy-to-analyse probes
- Save time and minimise mixing errors with easy-to-use, pre-mixed probes
- Ensure consistency with probes optimised to provide the same coverage of the IGH region across the range

IGH *Plus* Range

Rearrangements involving the IGH gene have been identified in numerous different diseases, in both Acute and Chronic Leukaemias as well as Lymphomas and Multiple Myeloma.

Our IGH *Plus* probe range includes a Breakapart probe, which allows the detection of an IGH rearrangement event irrespective of the partner gene.

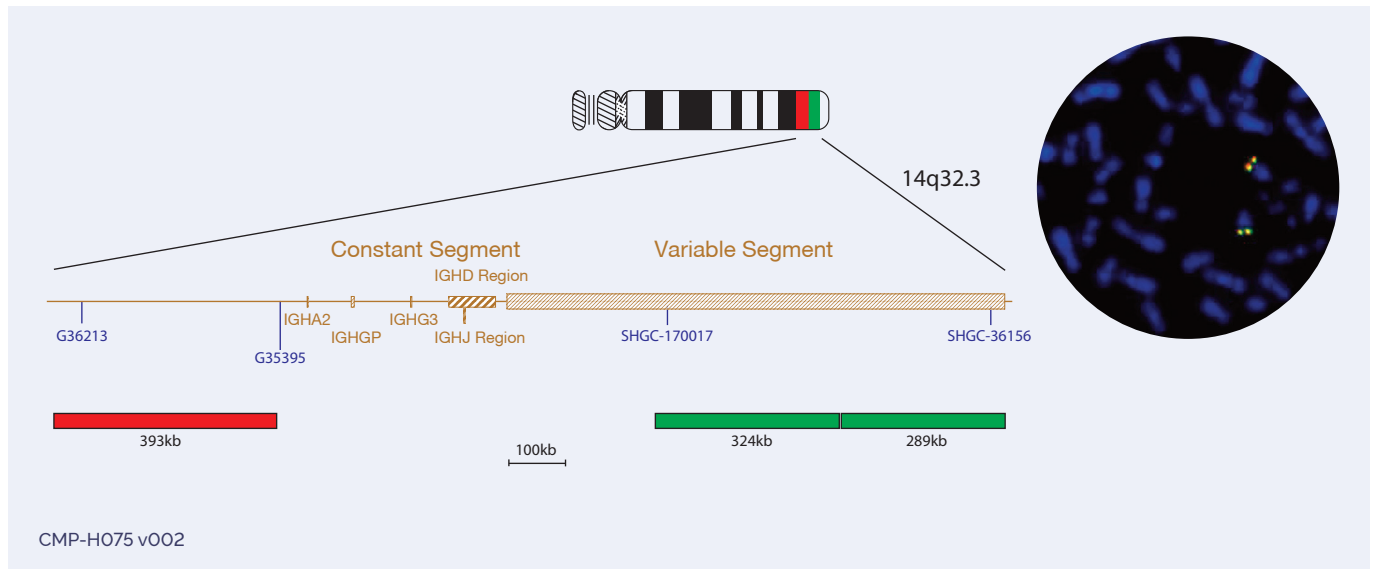
There are a number of recurrent translocations associated with each malignancy, with more being described regularly. Our comprehensive IGH *Plus* Translocation, Dual Fusion products include all of the best-characterised fusion partner events.

The OGT Partnership

Behind every sample is a life that can be improved through the right care decisions. The OGT partnership approach is key to providing the highest level of service, working closely with you to understand your unique challenges, customising our approach to meet your exact needs. Choose CytoCell® probes for your FISH analysis; our effective, accurate and simple to use products help clinical decision makers to reach the right decisions for each patient.

IGH Plus Breakapart

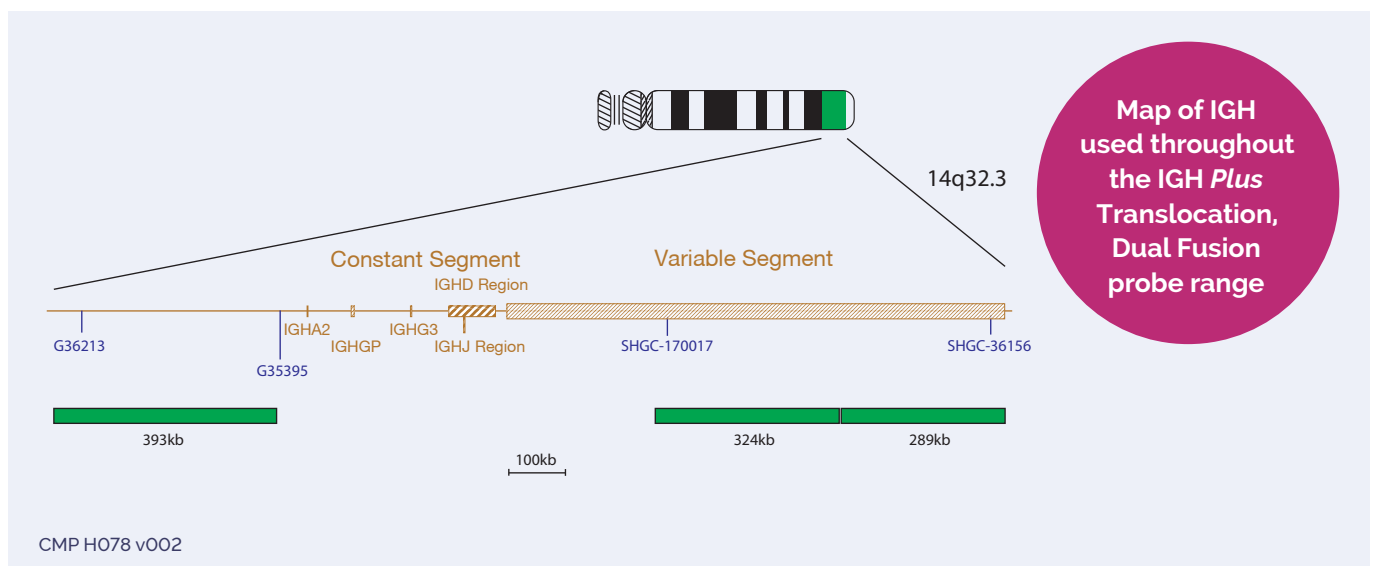
Cat. No. LPH 070-S (5 tests) | Cat. No. LPH 070 (10 tests)



IGH Plus Translocation, Dual Fusion Probes

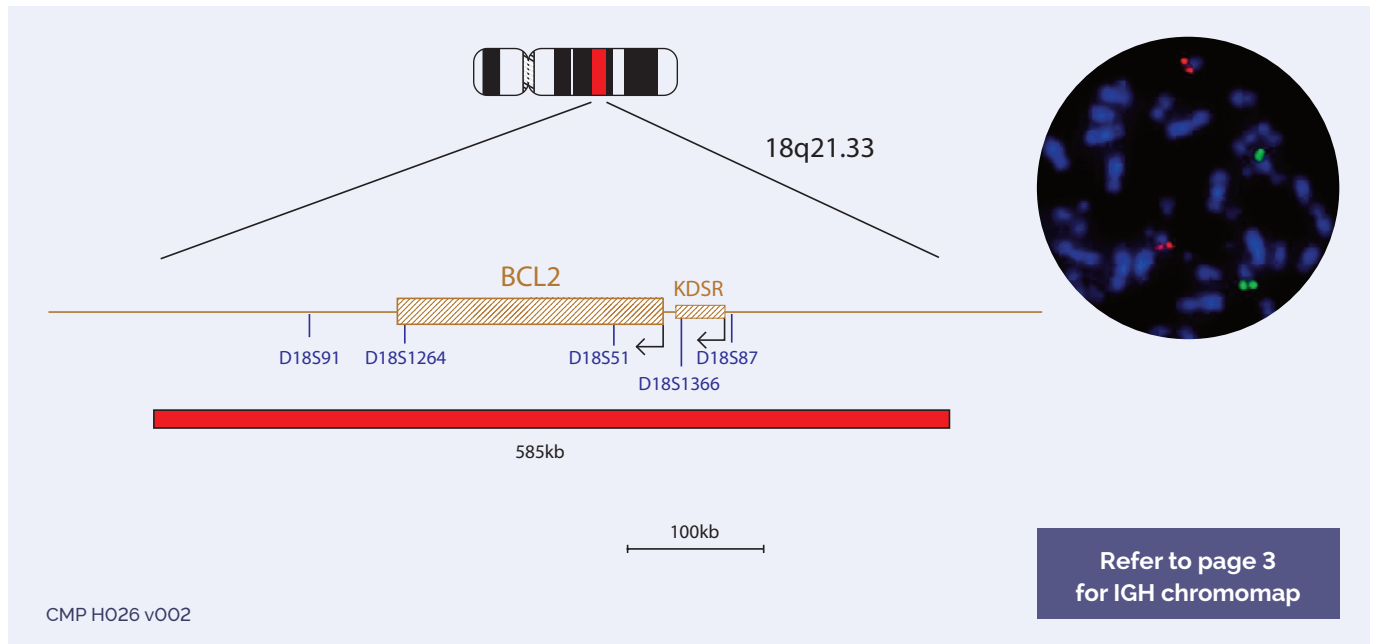
The CytoCell IGH Plus Translocation, Dual Fusion probes have been optimised to provide the same coverage of the IGH region as exhibited by our IGH Plus Breakapart probe.

IGH Plus Probe Design



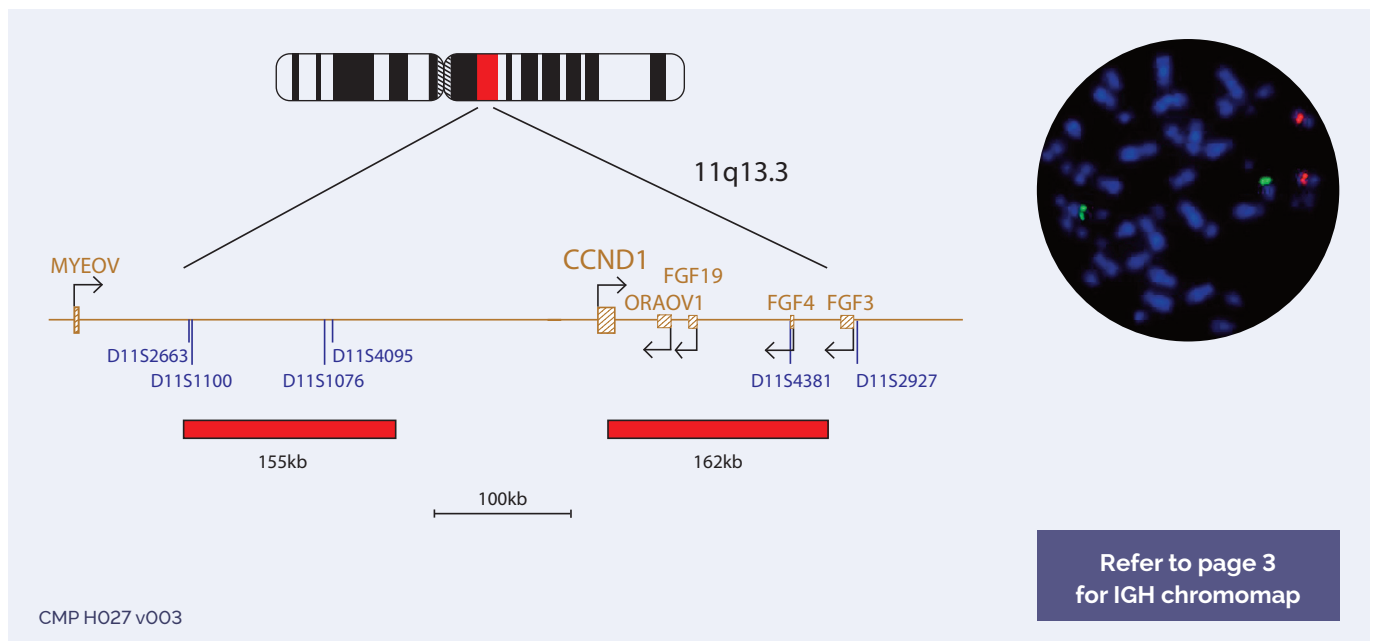
IGH/BCL2 Plus Translocation, Dual Fusion

Cat. No. **LPH 071-S** (5 tests) | Cat. No. **LPH 071** (10 tests)



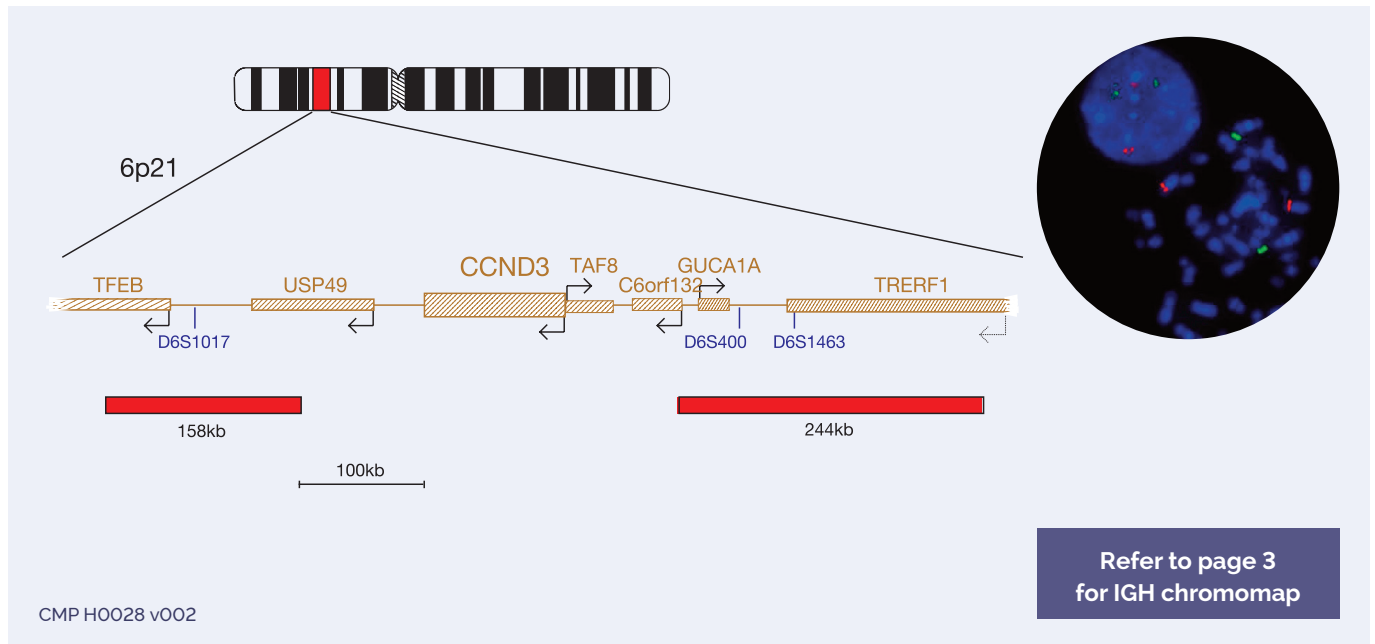
IGH/CCND1 Plus Translocation, Dual Fusion

Cat. No. **LPH 072-S** (5 tests) | Cat. No. **LPH 072** (10 tests)



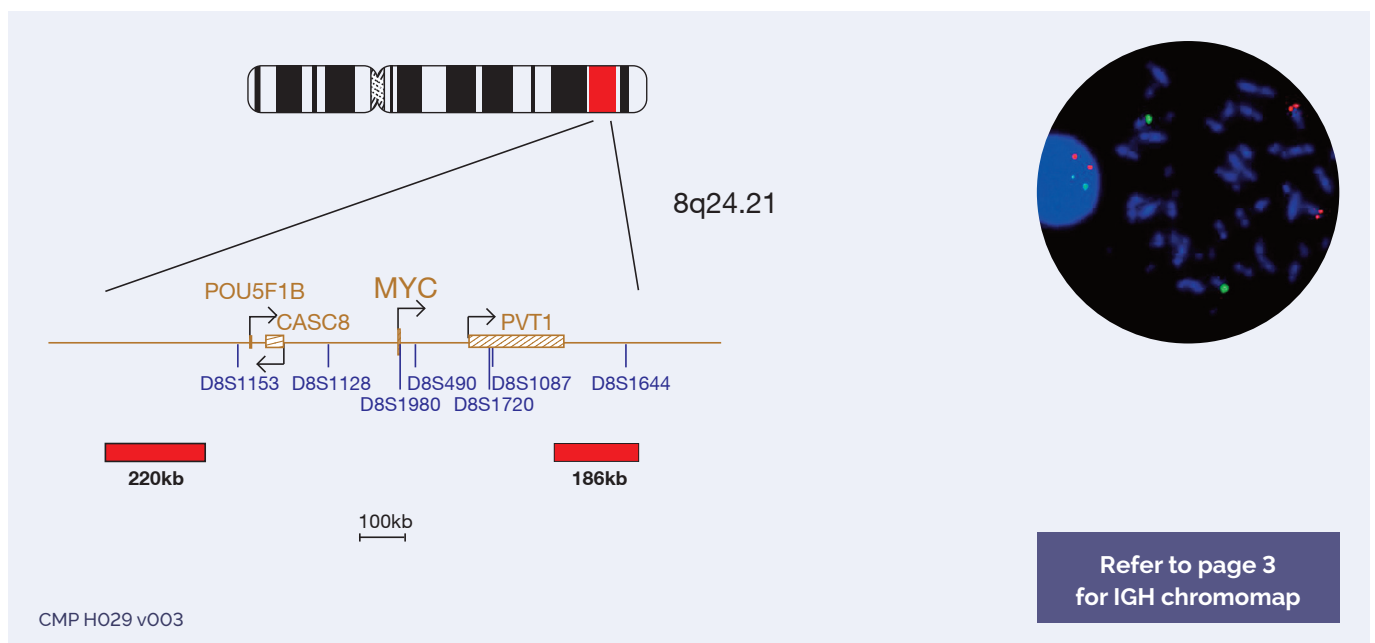
IGH/CCND3 Plus Translocation, Dual Fusion

Cat. No. **LPH 075-S** (5 tests) | Cat. No. **LPH 075** (10 tests)



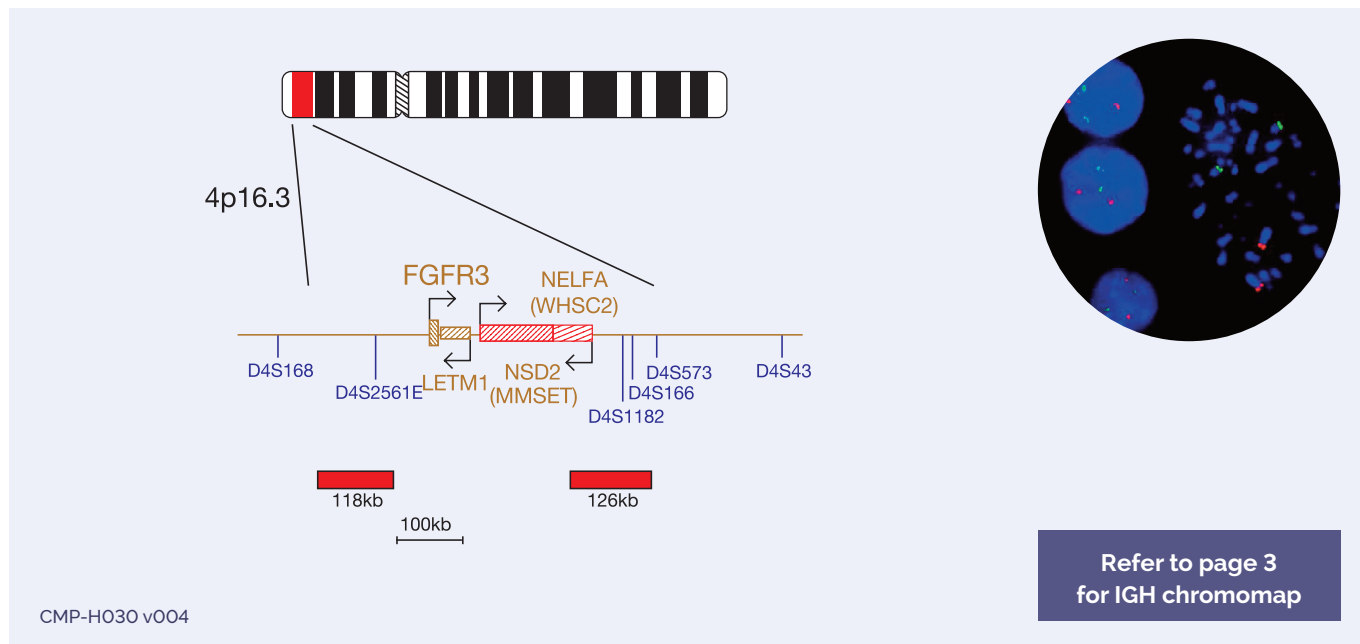
IGH/cMYC (MYC) Plus Translocation, Dual Fusion

Cat. No. **LPH 076-S** (5 tests) | Cat. No. **LPH 076** (10 tests)



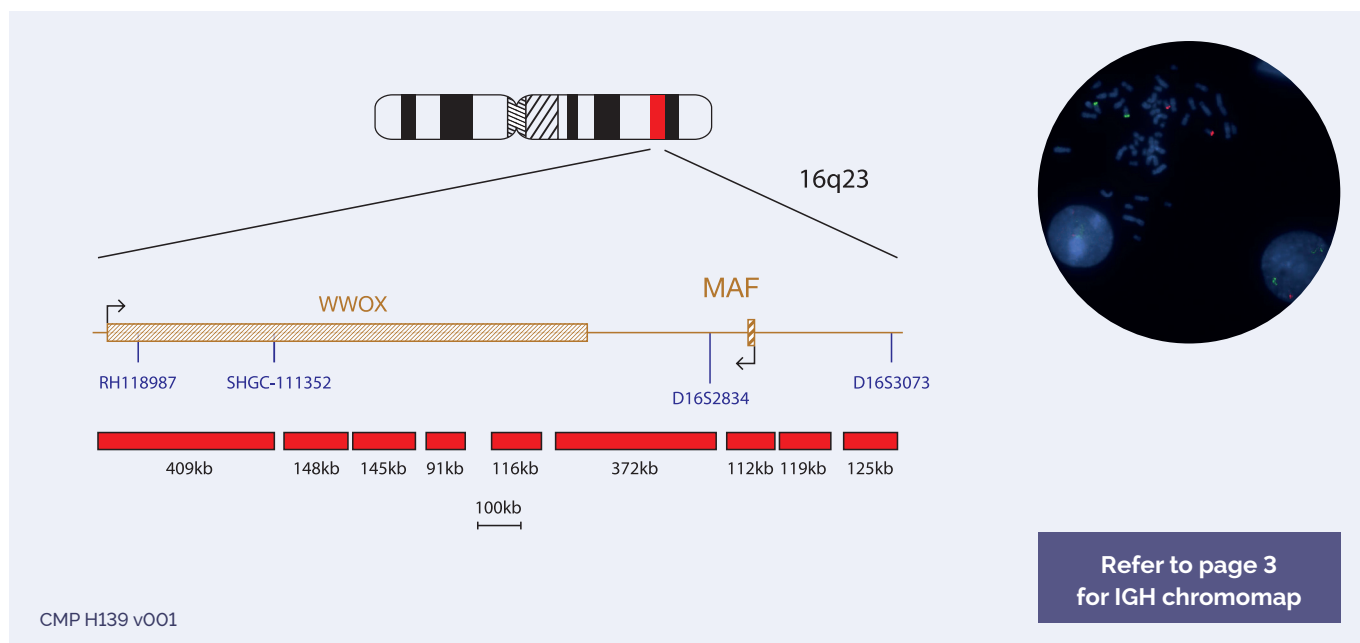
IGH/FGFR3 Plus Translocation, Dual Fusion

Cat. No. **LPH 074-S** (5 tests) | Cat. No. **LPH 074** (10 tests)



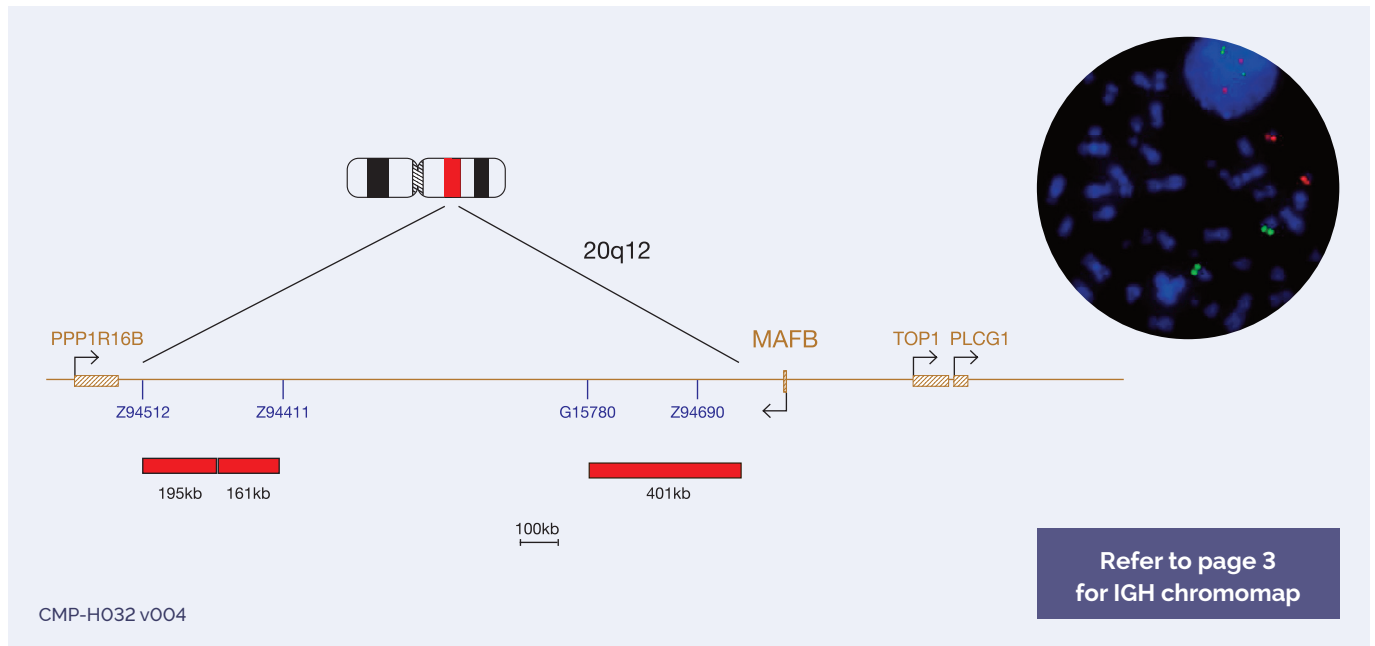
IGH/MAF Plus v2 Translocation, Dual Fusion

Cat. No. **LPH 108-S** (5 tests) | Cat. No. **LPH 108** (10 tests)



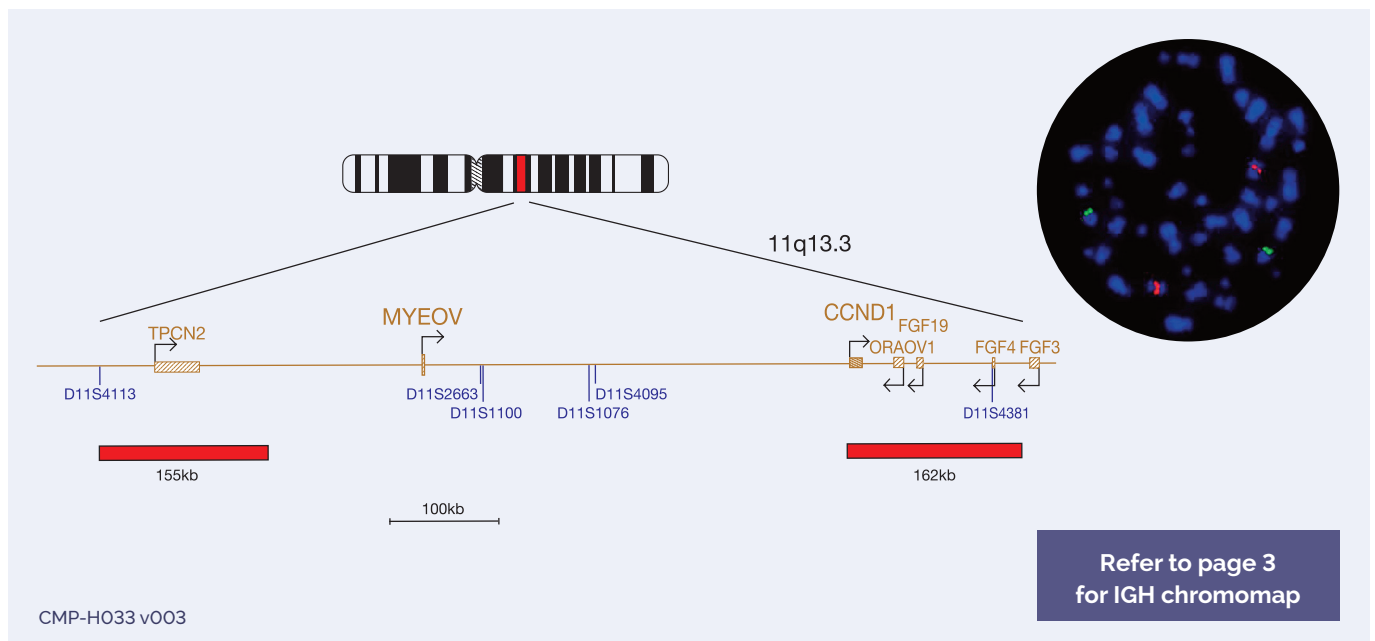
IGH/MAFB Plus Translocation, Dual Fusion

Cat. No. **LPH 077-S** (5 tests) | Cat. No. **LPH 077** (10 tests)



IGH/MYEOV Plus Translocation, Dual Fusion

Cat. No. **LPH 078-S** (5 tests) | Cat. No. **LPH 078** (10 tests)



Ordering information

UK +44 (0) 1223 294048

contact@ogt.com

ogt.com



Haematology IGH Probe Range

Probe Name	Chromosome Region	No. Tests	Cat. No.*
IGH Plus Breakapart	14q32.3	5 or 10	LPH 070
IGH/BCL2 Plus Translocation, Dual Fusion	14q32.3/18q21.33	5 or 10	LPH 071
IGH/CCND1 Plus Translocation, Dual Fusion	14q32.3/11q13.3	5 or 10	LPH 072
IGH/CCND3 Plus Translocation, Dual Fusion	14q32.3/6p21	5 or 10	LPH 075
IGH/cMYC (MYC) Plus Translocation, Dual Fusion	14q32.3/8q24.21	5 or 10	LPH 076
IGH/FGFR3 Plus Translocation, Dual Fusion	14q32.3/4p16.3	5 or 10	LPH 074
IGH/MAF Plus v2 Translocation, Dual Fusion	14q32.3/16q23	5 or 10	LPH 108
IGH/MAFB Plus Translocation, Dual Fusion IGH Breakapart	14q32.3/20q12	5 or 10	LPH 077
IGH/MYEOV Plus Translocation, Dual Fusion	14q32.3/11q13.3	5 or 10	LPH 078

*For 5 test kit add -S to catalogue number, e.g: LPH ###-S.

Haematopathology IGH Probe Range

Probe Name	Chromosome Region	No. Tests	Cat. No.†
IGH Breakapart	14q32.3	5 or 10	LPS 032
IGH/BCL2 Translocation, Dual Fusion	14q32.3/18q21.33	5 or 10	LPS 033
IGH/CCND1 Translocation/Dual Fusion	14q32.3/11q13.3	5 or 10	LPS 031
IGH/MALT1 Translocation/Dual Fusion	14q32.3/18q21.31-q21.32	5 or 10	LPS 034
IGH/MYC Translocation, Dual Fusion	14q32.3/8q24.21	5 or 10	LPS 035

†For 5 test kit add -S to catalogue number, e.g: LPS ###-S.



A Sysmex Group Company

What binds us, makes us.

CytoCell Ltd., Oxford Gene Technology, 418 Cambridge Science Park, Milton Road, Cambridge, CB4 0PZ, UK

CytoCell: This document and its contents are © Oxford Gene Technology IP Limited – 2021. All rights reserved. Trademarks: OGT™ (Oxford Gene Technology IP Ltd); CytoCell® (CytoCell Ltd). IVD: For *in vitro* diagnostic use. Product availability may vary from country to country and is subject to varying regulatory requirements. Please contact your local representatives for availability.

